



— E - M O T I O N —

## SPECIFICATIONS

**Builder** SUNSEEKER - **Model** Sunseeker 131

**Year** 2016

**Length** 40,05m

**Beam** 8.09m

**Draft** 2.85m

**Hull construction** GRP

**Cruising speed** 18kn - **Max speed** 25kn

**Engines** 2 x MTU 12V 400 M93

**Stabilisers** at anchor and underway

**Consumption** 1 150L/h

**Number of crew** 8

**Number of cabins** 5

**Cabin configuration** 1 Master, 2 VIP, 2 Twin

**Total guests cruising** 12 - **Sleeping** 10







## TENDERS & TOYS

Williams 5.65m Diesel Jet

2x Seadoo RXP Jetskis

2x Seabobs F5s

2x Stand up Paddle Boards

1 x Wakeboard

1 pair of water skis

1 Kneeboard

Towables: Donut & Jobe

RYA Training Center



## AMENITIES

Audio sound system throughout the yacht

Large TV's in both Lounges with Sky TV, DVD facilities and Apple TV

All cabins have TV facilities with DVD player

Audio sound system on all decks with zone control used with an iPad



MAIN SALON







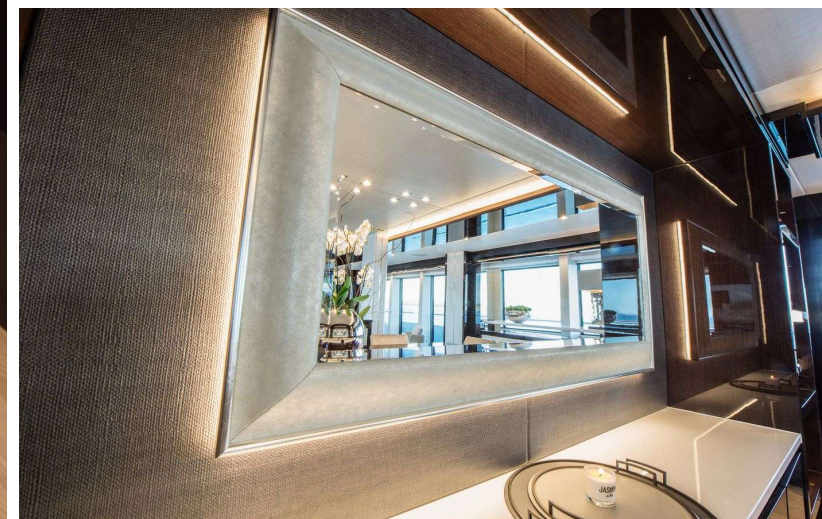
D I N I N G





UPPER SALON









MASTER SUITE



GUEST SUITE





MASTER ENSUITE



MAIN DECK





UPPER DECK

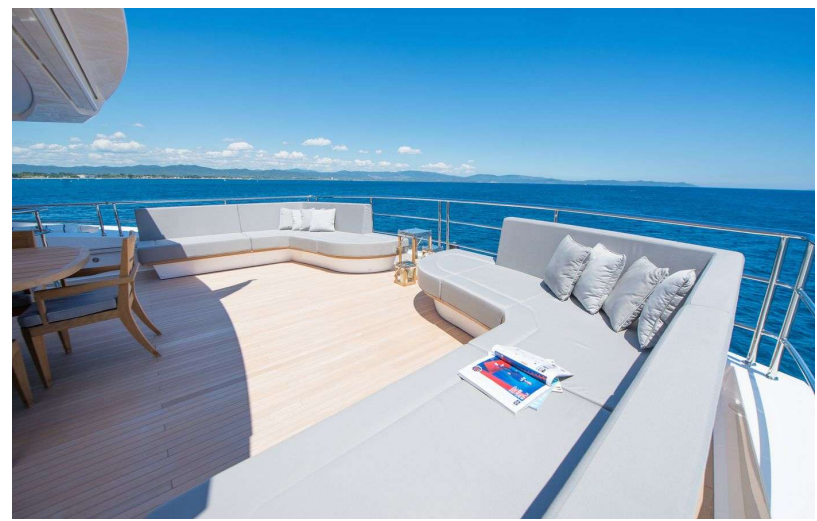


FORWARD DECK





JACUZZI - SUN DECK



*E-MOTION*

is a charter guest's *DREAM YACHT*.

From her *INCREDIBLY COMFORTABLE* interior spaces to her excellent alfresco areas ideally suited for outdoor living, this sunseeker motor yacht is truly the

*EPITOME OF LUXURY AT SEA...*

