



IMPERIAL PRINCESS
BEATRICE

— IMPERIAL PRINCESS BEATRICE —

SPECIFICATIONS

Builder PRINCESS - **Model** Princess 40M

Year 2012 - **Refit** 2018

Length 40.00 m

Beam 8.00 m

Draft 2.29 m

Hull construction GRP

Cruising speed 13 kn - **Max speed** 20 kn

Engines 2 x MTU 3600 HP

Stabilizers at anchor and underway

Consumption 350 L/h

Number of crew 7

Number of cabins 5

Cabin configuration 3 Double, 2 Twin (convertible into doubles)

Total guests cruising 12 - **Total guests Sleeping** 10





TENDERS & TOYS

Tender LG 6.5m motor Verrado 150

Chase boat Fjord 38 Express

2 x Sea-doo Jetski

3 x Seabob F5S

2 x Paddleboards

2 x 2 person kayak

3 x Wakeboards,

Set of skis

2 x Towable doughnuts

10 x Sets of snorkeling gear

Fishing Equipment

2 x Folding bikes



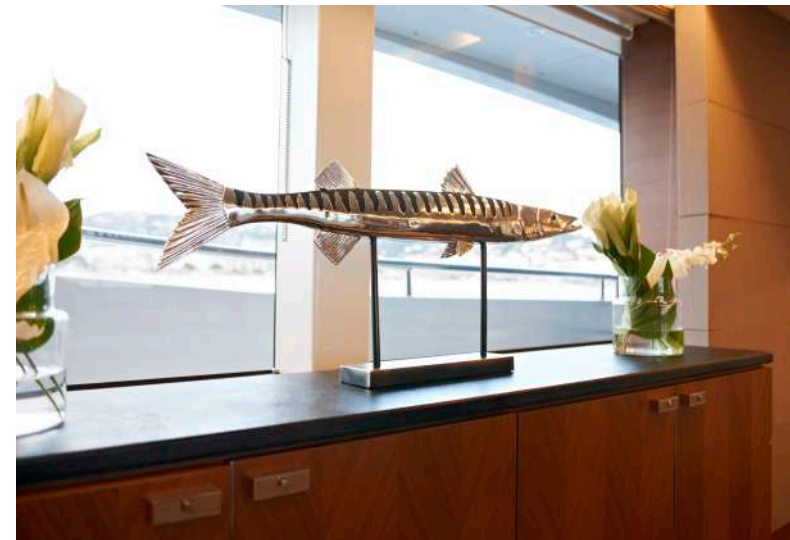
AMENITIES

Wifi

Deck Jacuzzi

Air conditioning

Sound system inside and outside





MAIN SALON

DINING



MAIN SALON

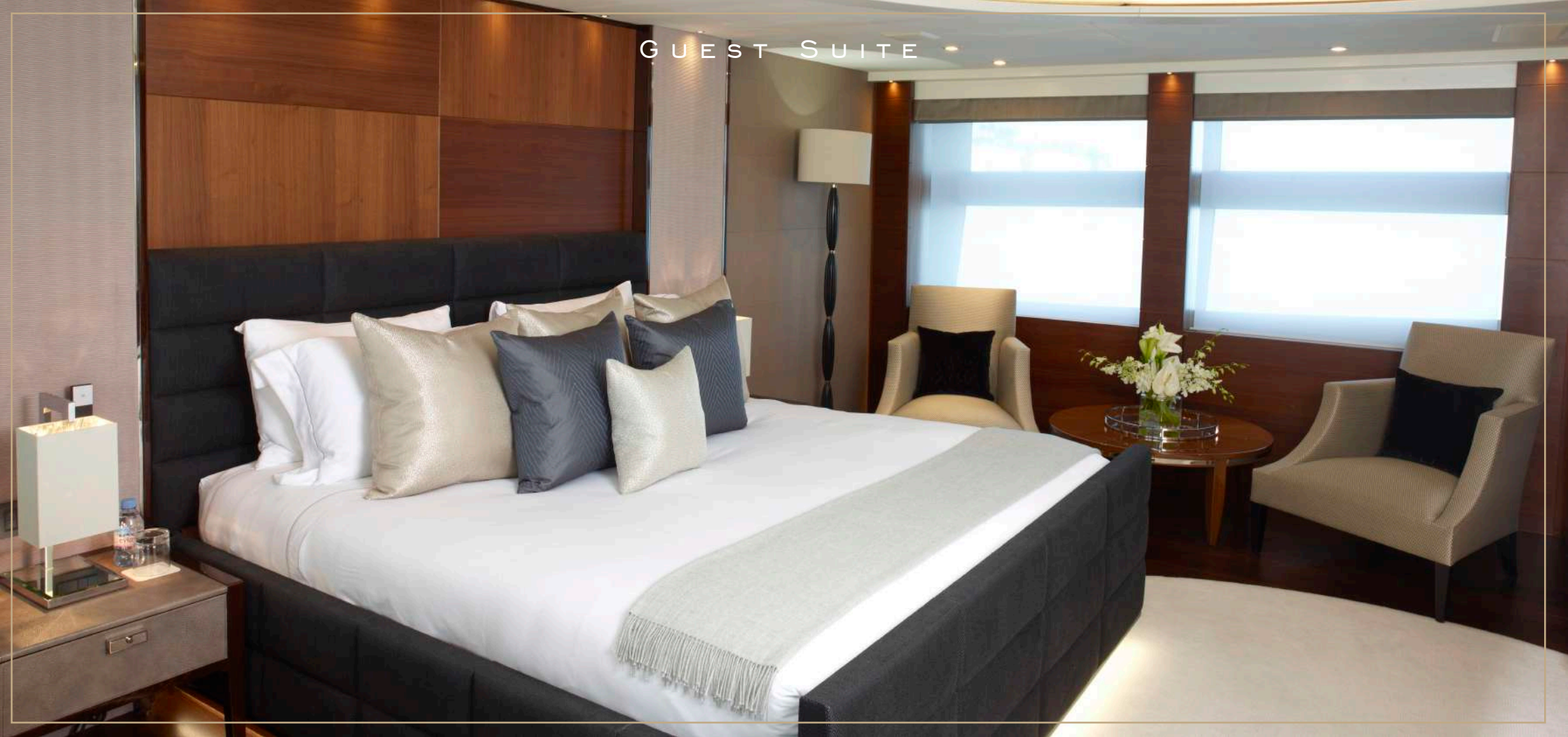


DINING

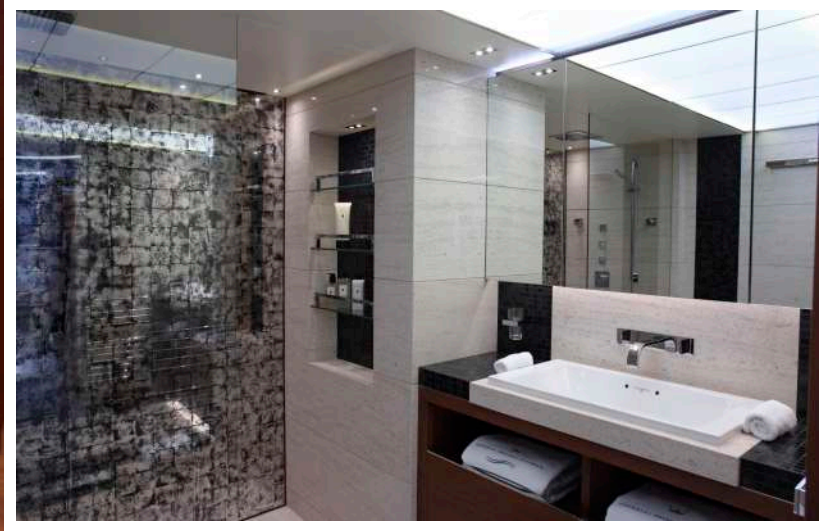
MASTER SUITE



GUEST SUITE



MASTER SUITE



UPPER DECK





MAIN DECK

UPPER DECK





SUN DECK



SUN DECK



SUN DECK

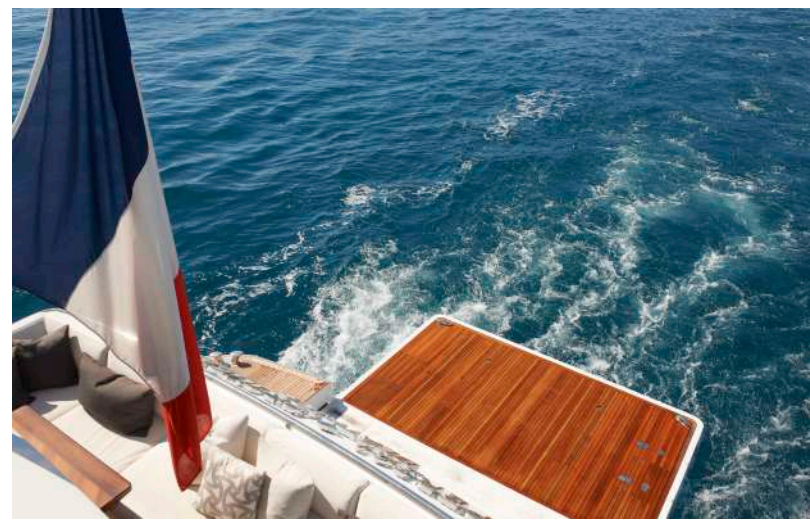


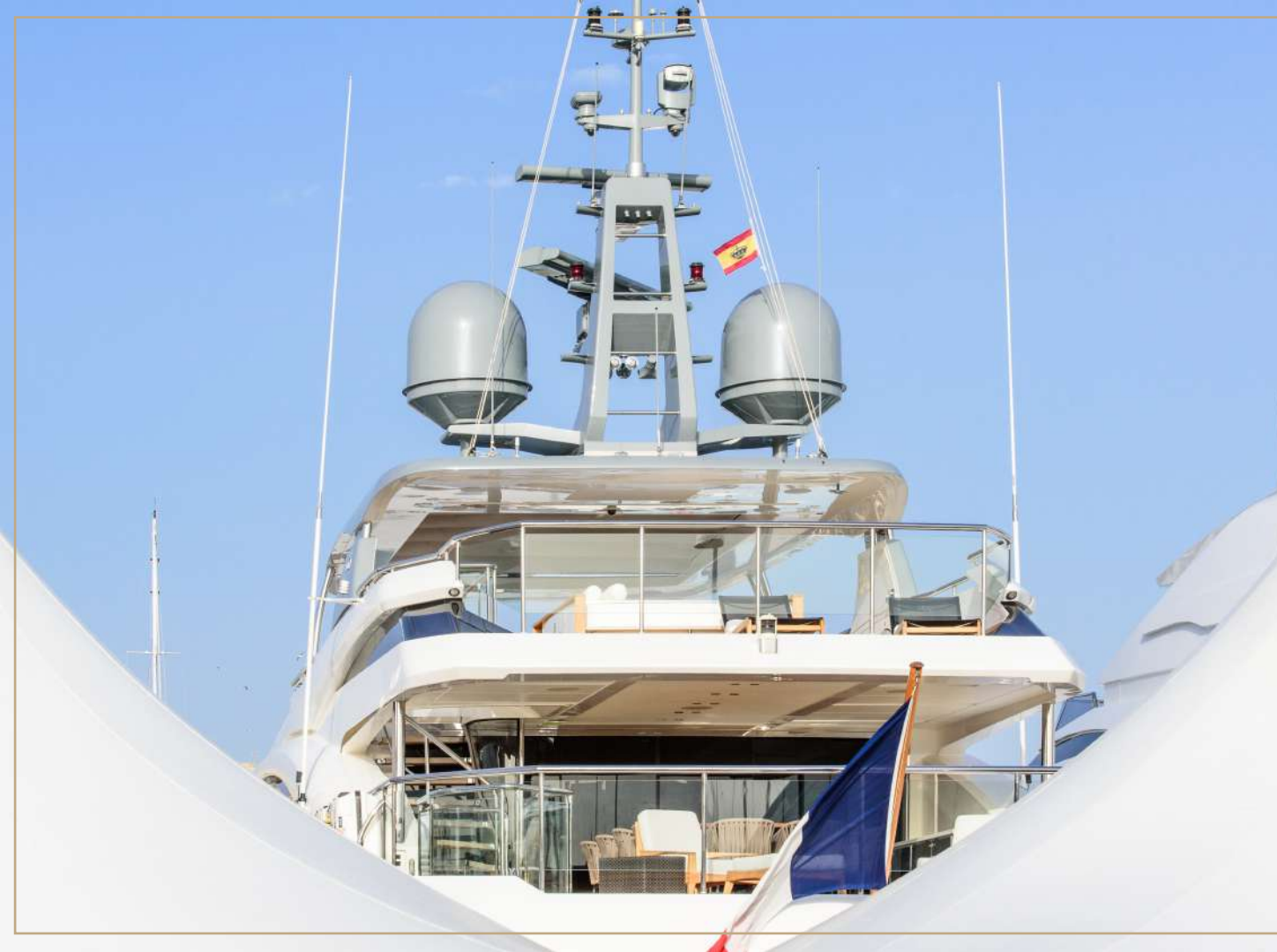


PORTUGUESE DECK

PORTUGUESE DECK









Winner of the prestigious *"WORLD SUPERYACHT AWARDS"* in 2013, Imperial Princess Beatrice embodies the ultimate expression of **QUALITY, LUXURY, PERFORMANCE AND SPACE**. Her enthusiastic crew of 8 people will make your stay on board a pleasant and **INCOMPARABLE EXPERIENCE...**

These details are given in good faith and are believed to be correct but their accuracy cannot be guaranteed.

